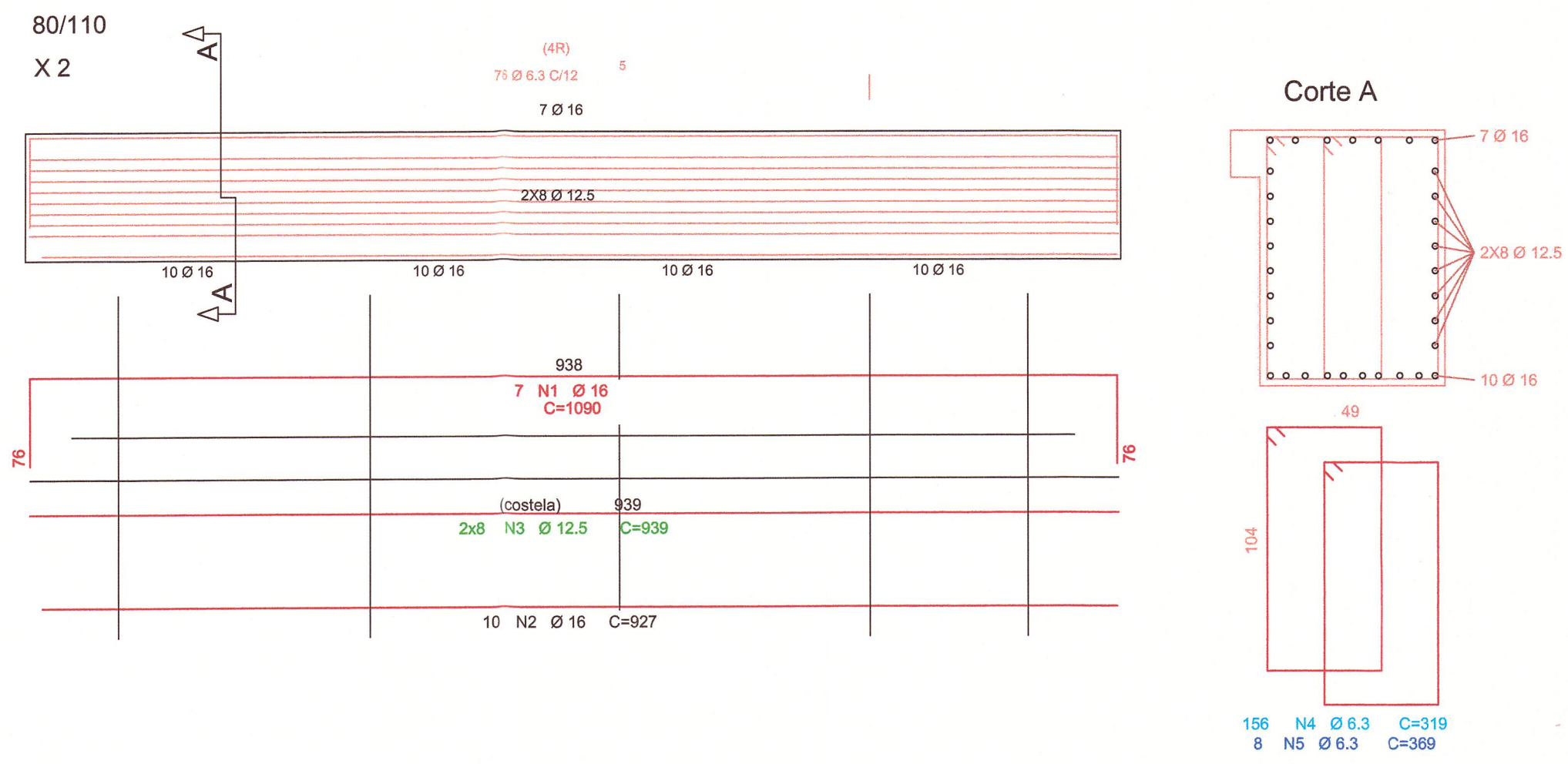
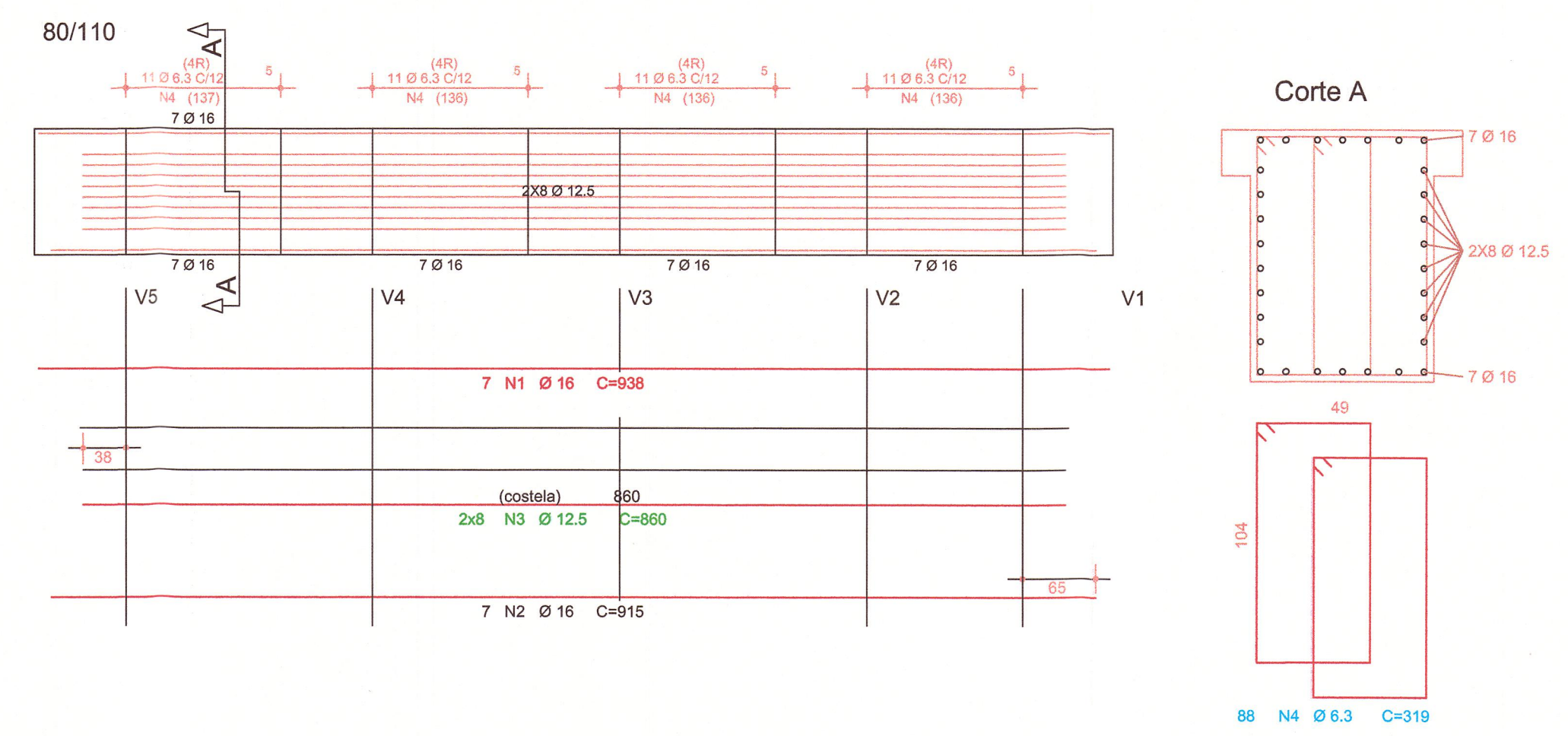


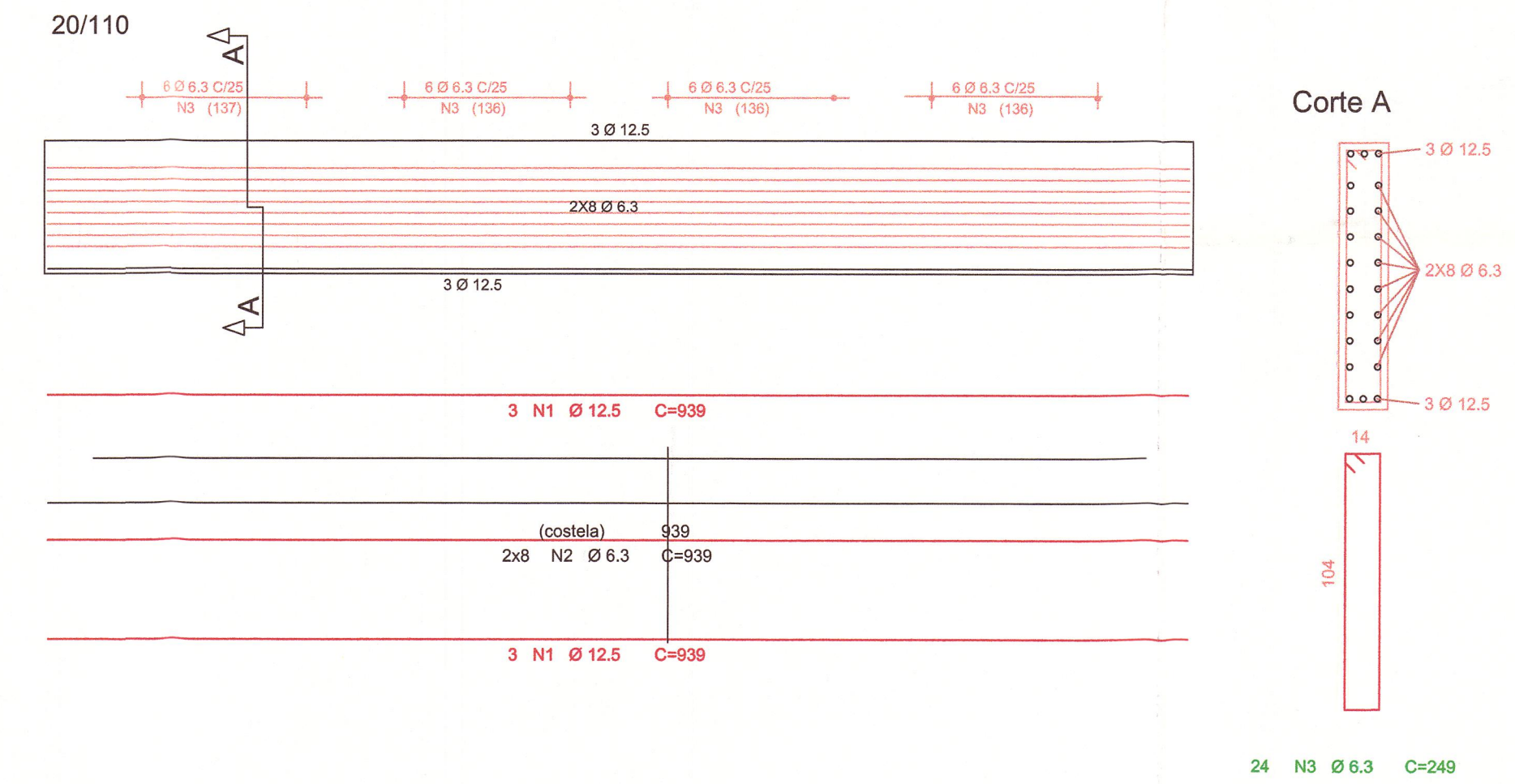
### VIGA TRANSVERSAL DE APOIO NAS CABECEIRAS



### VIGA TRANSVERSAL TRAVA LONGARINAS

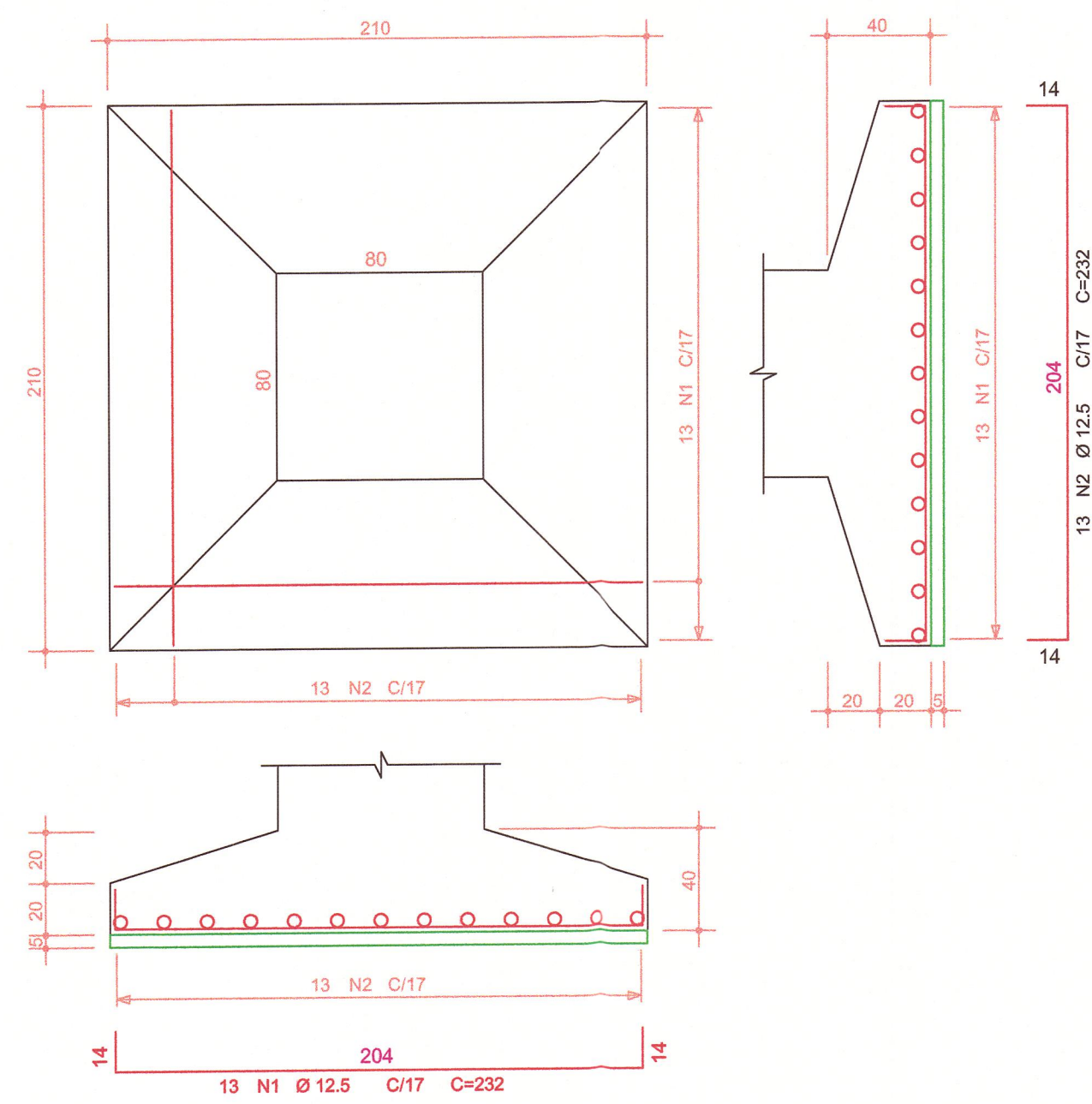


### VIGA TRANSVERSAL DE TRAVA DAS LONGARINAS JUNTO AO APOIO x2

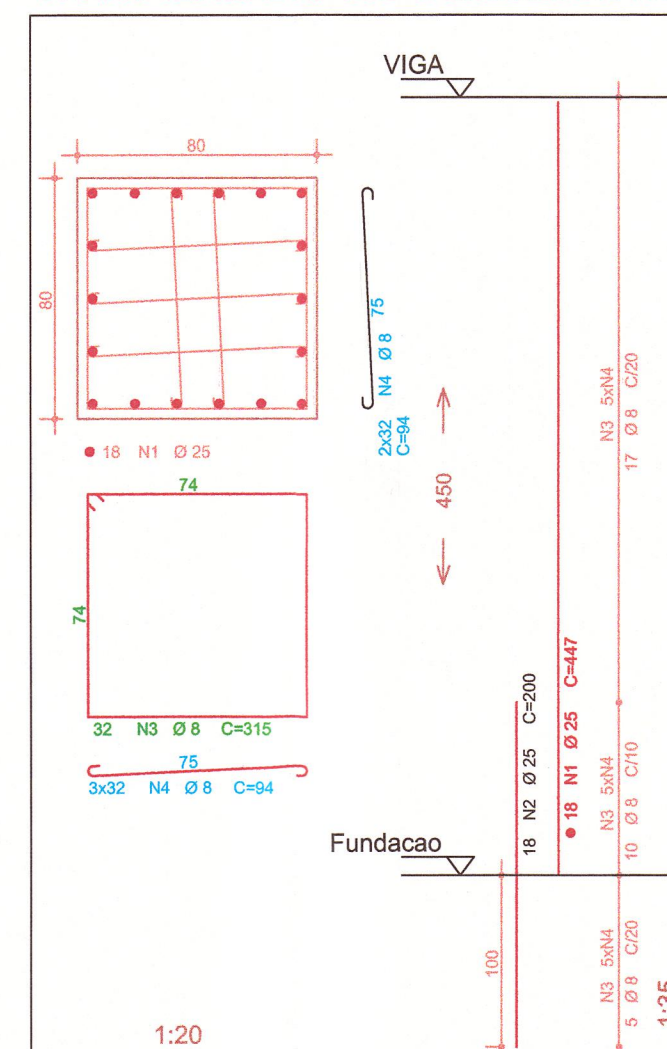



### SAPATA APOIO PILAR

(2 X) (Escala 1:25)



### PILARES PARA APOIO DAS VIGAS TRANSVERSAL APOIO CABECEIRAS x 2



  
**Milton Savio Demarch**  
 Engº Civil CREA/SC 018.845-0

PROPRIETARIO	PROFISSIONAL
<b>MSD ENGENHARIA E CONSULTORIA</b>	
RUA DOS PIONEIROS 175 - CENTRO - SC - FONE: (0xx47) 3521-2470	
OBRA: PROJETO DE PONTE EM CONCRETO ARMADO -CLASSE TB-45	Projeto: ENGENHARIA
PROPRIETARIO: PREFEITURA MUNICIPAL DE AGRONOMICA	Data: JULHO/2017
ENDERECO OBRA: RIO TROMBUDO - RUA HERCILIO POFFO -AGRONOMICA -SC	Escala: INDICADA
REFERENCIA: DETALHE FERRAGEM VIGAS - SAPATAS E PILARES	Folha: 06
RESPONSAVEL TECNICO: MILTON SAVIO DEMARCH	DESENHO: CREA 18845-0